



# The News-Patch

June 2022

## Our Mission Statement:

**To promote  
the fellowship  
and art of quilting**

## Inside this issue:

- From the President 1
- June Program 2
- Membership 2
- June Retreat 2
- Quilt Show Volunteers 3
- Raffle Baskets 3
- Harvest of Quilts 2022 3
- Block Lotto 5
- Getting to Know... 7
- Guild Information 8

## FROM THE PRESIDENT

Happy Summer!

Wow, what a fun 4-day quilting retreat 😊😊 Thank you, Kim, for all your work in planning the event, and also to everyone who participated in the amazing food, setup & take down.

We have a lot of fun events in the upcoming months; the main event of course is our Quilt Show. Please step up and volunteer a few hours here & there to make this event a success. We were not able to have our 2020 show, so the success of this show is extremely important to the guild. Kathi has also been hard at work taking our raffle quilt to several events. If anyone is able to go with her to assist, that would be greatly appreciated.

Kathy (aka Mary) will also be organizing a seasonal quilt lotto design. We thought if we gave members a couple of months, we might have better participation – just another idea your board is working on to increase member involvement.

Finally, if you haven't been featured in our "Getting to Know You" section, please let Chris know. It is an excellent way for all of us to get to know one another better.

Happy Quilting,  
Jennifer

## JUNE PROGRAM

### Snack time!!

We will list 5-6 people to bring snacks per month with the understanding that not everyone will make it to the meeting. If it is your month, please bring a snack to share. Prepackaged food is great, homemade baked goods are outstanding!

#### June Treats

Kathy W  
Rosalie W  
Marie W  
Pat Barger  
Carol B

#### July Treats

Sidneya B  
Pat Boesche  
Jean B  
Madaline C  
Kim C

### June Program: Member Trunk Show featuring Kathy Wells!

Kathy Wells has been a member of the DeKalb County Quilters Guild almost from the start of the guild. She is very prolific and there doesn't seem to be a technique that she will not try. From hexies to miniatures, applique to piecing, and everything in between, Kathy has tried it and has a fantastic quilt to show for her learning adventures. In addition to Kathy's own quilts she has antiques handed down from earlier generations to share with us.

While having national quilters speak with our group is great, we have a huge amount of talent amongst us. This keeps our costs down and we get to see some prized possessions, first quilts, and maybe some that didn't come out as planned. Show and Tell is great for showing off new projects but we rarely get a chance to see a group of quilts that represent a quilter's entire history (I know we all give many away for gifts, but I'm sure you keep a few for yourself too). I hope to hear from others who want to share their passion and journey with the group.

## MEMBERSHIP

June is the beginning of our fiscal year, so membership forms are due this month. Many of you have already given me your registrations and I thank you. We have many interesting things planned for the coming year, so bring a friend along with you! Please note that members who have not paid dues by the July meeting will no longer receive the newsletter in August.

Kim Colness - Membership

## QUILT SHOW VOLUNTEERS

We are also looking forward to our quilt show in September. I will have sign-up sheets for you to volunteer for the show. We will need ALL hands on deck (and then some) to make this show a success. I have heard that attendance has been high for quilt shows this year so hopefully that trend will continue for us!

Also, if you are interested in doing a demo during the show please let us know. We would like have mini demos going on as we have during previous shows.

If you have any questions, don't hesitate to call, text or email me 815-757-8115 or [kimcolness@comcast.net](mailto:kimcolness@comcast.net).

Sew blessed!  
Kim Colness

## QUILT SHOW RAFFLE BASKETS

Raffle Basket Donations from guild members will be accepted at the May, June, July and August meetings. Take a look through your quilting stash and supplies and if you come across some items which no longer interest you, which no longer seem right for the original intended recipient, which are a duplicate of something you previously purchased or was gifted, or which are just taking up too much space in your sewing area, donate them to the guild for our quilt show raffle baskets. We're sure to gather some awesome items for making up some tempting raffle baskets!

## HARVEST OF QUILTS 2022 (9/24-25)

The Harvest of Quilts 2022 Quilt Entry form is on the website, [dcqg.org](http://dcqg.org). Please hand these out to whomever you know that might be willing to have a quilt at our show.

I could use some assistance with taking the Raffle Quilt to other guilds for the purpose of advertising our show and selling raffle tickets. This is a great way to let guild members know about both visiting the show and entering a quilt in the show either for display or judging.

Here's the information about where and when I could use the company. It's always best to have at least two people. I'll do all the driving and pay for the gas! Give me a call at the number below or send a message if you'd like to come along.

- Wed June 22, Faithful Circle Quilters, Downers Grove, Meeting starts at 7pm.
- Mon June 27, Prairie Star, St. Charles, Meeting starts at 7pm.
- Tue June 28, Prairie Star, St. Charles, Meeting starts at 9:30am.
- Mon Aug 1, Petunia City Quilters, Dixon, Meeting starts at 6:30pm.

I am working on getting a couple more. Please let me you if you wish to join me at one of these meetings. We get in free and get to promote our guild and most importantly our show!

Thanks so much for your assistance! And remember PROMOTE the show! We still have bookmarks available, and the poster and quilt show application are available online.

Kathi Davis, Chair  
Harvest of Quilts 2022  
[quiltshow@dcqg.org](mailto:quiltshow@dcqg.org)  
815-895-8229

### **Harvest of Quilts 2022 Quilt Show Committee:**

**Chair:** Kathi Davis,  
**Treasurer:** Peg Simonds,  
**Boutique:** Jean Bradford,  
**Volunteers:** Kim Colness,  
**Vendors:** Chris Wells,  
**Raffle Tickets:** Kathy Wells,  
**Ribbon Toppers:** Kathy Wells.

**A friendly reminder...**

**Baby quilts made for the Rockford NICU Center should be 47" x 54"**

# BLOCK LOTTO

With May in the rearview mirror, we have put our bird feeders up again and enjoy seeing all the different birds that visit for a snack... cardinals, robins, mourning doves, purple and gold finches, a variety of colors to brighten up a summer day!

Thinking of this reminded me of a pattern Jenny Doan feature recently in one of her free Friday tutorials. She shared a link to the pattern, which was originally shared on the now-defunct blocklotto.com website. The pattern, from 2013 by Jean-sophie Wood, is an adorable little bird that can be altered in color, direction and height.

For our Summer Lotto block, let's make some birds. In August, bring your blocks and you will get as many chances to win, as blocks you enter into the drawing! If we get enough blocks, we may even be able to have multiple winners.



Bird Block Pattern  
©2013 Jean-sophie Wood

## ABOUT THE BLOCK



### BASIC BIRD

I've been seeing a lot of birds flying (or walking) on quilts in blogland for a while. It's about time we invited some of these feathered friends to the Block Lotto.

This 6 by 9 inch rectangle (finished size) basic bird block is inspired by Lynne Tyler's [Bird How-to](#) tutorial on her blog, Patchwork Menagerie.

## FABRIC GUIDELINES

### CHOOSING FABRICS FOR YOUR BLOCK

Bird block is made from FOUR fabrics:

**SKY**—a soft blue fabric. It may be solid, a tone-on-tone (TOT) print or a multi-color low-volume print that "reads as blue" if you are looking at it from across the room

**BODY**—may be any BRIGHT fabric, solid, tone-on-tone or multicolor print.

**WING**—may be any BRIGHT fabric, solid, tone-on-tone or multicolor print that has good contrast with the BODY fabric.

**BLACK (or Black and White)**—may be solid BLACK, black on black (BOB) print or black and white print. Used for both beak and legs.

If you make multiple blocks, you may use the same SKY and BLACK (or BLACK and WHITE) fabric in all your blocks. You may use the Bright BODY and WING fabrics in multiple blocks, as long as each body + wing combination is unique.

## CUTTING FABRICS



### CUT FABRICS FOR ONE BLOCK

In this example, the BODY is yellow, WING is orange and I used a BOB for beak and legs.

From SKY cut:

One 4-7/8 inch square cut in half diagonally \*

One 1-1/2 inch square

One rectangle 1 1/2 by 4 1/2 inches

One rectangle 3 by 6 1/2 inches

One rectangle 3 by 8 inches \*\*

From WING, cut:

One 4-7/8 inch square cut in half diagonally \*

From BODY cut:

One rectangle 1 1/2 by 4 1/2 inches

Two 1 1/2-inch squares

From BLACK (or Black and White), cut:

Two 1-inch by 4 1/2-inch rectangles \*\*

One 1 1/2 inch square \*\*



### NOTES

\* If you'd like to cut the square for the large triangles larger, that's OK. (I cut mine at 5 inches square. See the note about when/how to trim the HST unit to 4 1/2 inches.

\*\* These pieces are cut larger and trimmed after used in Improvisational piecing technique. Several of the sneak peekers suggested cutting the longer rectangle (SKY for the leg section) a bit taller to make it easier to square up and trim during the sewing/assembly of the block.



## SEWING THE BLOCK

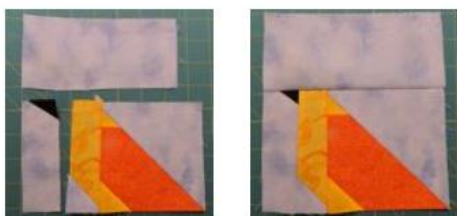
1. Trim and press. Then sew the two units together.



2. Create the beak by using the small BLACK square to the SKY rectangle. The beak should be smaller and slimmer than just adding a square and stitching diagonally. Position it as you like, making sure the folded back BLACK portion will cover the corner of the SKY after it's sewn. I creased the fabric so I would know where the seam should go.



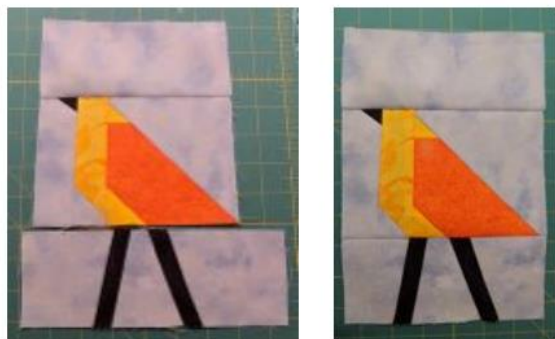
3. Stitch. Press. Trim to maintain the rectangle shape.
4. Sew the sky/beak rectangle to the bird.



5. Add the 3 by 6 1/2 inch SKY rectangle to the top.

## FINISHING THE BLOCK AND VARIATIONS

10. Place the leg section under the bird and put it into position and sew in place. Press. Trim block to 6 1/2 by 9 1/2 inches.



### VARIATIONS OF THE BASIC BIRD BLOCK

To make a TALLER or SHORTER bird, change height of the two large SKY rectangles. In the basic block, each is cut at 3 inches high. You can change the proportions to make a shorter or taller bird. The two (new) heights should add up to 6 inches. The height of the leg section should be at least 2 inches. The height of the sky above the bird should be at least 1-1/2 inches. The taller you make your bird, the longer the skinny BLACK rectangles will need to be.

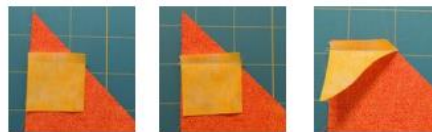
To make a RIGHT-FACING bird, you'll use exactly the same pieces to create a mirror image of our bird.

## SEWING THE BLOCK



### ASSEMBLE THE BLOCK

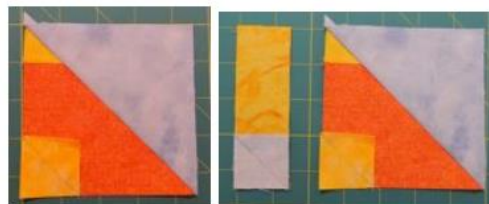
6. Add one small square of BODY fabric to the WING triangle by positioning it as shown, sewing, then trimming to original triangle shape.



7. Add the SKY triangle to sew a half square triangle. Square up to 4 1/2 inches square by trimming from the sides without the piece of BODY before continuing.



8. Add the other small square of BODY to the corner of WING fabric, by placing it, right sides together, aligning the corner and edges, drawing a line diagonally across the small square and sewing on the line.
9. Repeat the process with the rectangle of BODY fabric and the square of SKY.



## SEWING THE BLOCK

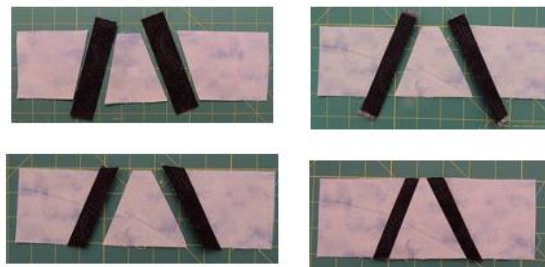


### ASSEMBLE THE BLOCK

11. Create the bird's legs by laying the 3 by 8 inch rectangle at the bottom of the bird and, using your rotary cutter, "draw" two slashes where you'd like to position the legs. Keep in mind that the space between the slashes will shrink by approximately 1/2 inch after the seams are sewn.



12. Insert the BLACK (or black and white strips and sews the rectangle back together again, first sewing the legs to one of the sky section, then trimming them even with the top and bottom of the sky section to make it easier to line things up.



## GETTING TO KNOW...DONNA MARTIN

**How long have you been a guild member?**

Since fall of 2019

**How long have you been sewing?**

I started sewing on a red toy Singer machine when I was around 7 or 8 years old.

**What was your first project?**

My very first projects were probably Barbie doll clothes and eventually clothes for myself. I've been working on quilting and other sewing projects for about 15 – 20 years now.



**On what are you currently working?**

My current quilting project is a puff quilt following the Lo & Behold Stitchery pattern. I'm beginning a new afghan with the Phoenix pattern by Hooked on Sunshine.

**Favorite colors?**

Ocean blues and pinks (I cannot choose just one!)

**Least favorite color?**

Probably orange and brown

**Favorite quilting celebrities?**

Jenny Doan and Donna Jordan

**Any other hobbies or interests?**

Crochet and Amazon shopping

If you're interested in reading previous interviews of our members, please check out old newsletters at [dcqg.org](http://dcqg.org)

To participate, please send a photo and your answers to the questions to [dcqgnews@gmail.com](mailto:dcqgnews@gmail.com) or bring to a meeting.

We'd love to get to know you too!

## GUILD INFO

Mailing Address: DCQG  
P.O. Box 385  
Sycamore IL 60178

Email Address: [info@dcqg.org](mailto:info@dcqg.org)

New Meeting Location: Federated Church  
612 W. State St.  
Sycamore IL 60178

### Meeting Info:

- Meetings are held the 4<sup>th</sup> Thursday of the month, January through October, with an annual Christmas Party in December.
- Doors opened at 6:30pm for gathering to meet and greet, with the meeting beginning at 7pm.

**Find us on Facebook!**

**Search for “DeKalb  
County Quilters Guild  
Group”**